

QUANTA



www.quanta.org.uk

CONTENTS

EDITORIAL	Roy Brereton.....	1
SUBGROUP MEETINGS		2
Jochen Merz Software	ADVERT.....	6
Programme Agenda.....		7
Radio Rallies in April - May 2005.....		8
Q-CELT	ADVERT.....	10
Plurals & Non-Plurals	Paul Merdinian.....	11
Library Updates	John Gregory.....	12
HELPLINE	Geoff Wicks.....	13
QL Today	ADVERT.....	14
RWAP QL SOFTWARE.....	ADVERT.....	15
CHAIRMAN'S REPORT 2005	John Mason.....	16
QUANTA Membership Secretary's Report for Year 2004		20
QUANTA Income and Expenditure Account for the Year Ended 31st December 2004.....		21
Quanta Balance Sheet as at 31st December 2004.....		22
QUANTA Treasurer's Report for Year 2004.....		23
QPCPrint – A Review	Dilwyn Jones.....	24
W.N.Richardson	ADVERT.....	30
Proportional printing of QUILL Files pt3 (final)	P.H.Warne.....	32
Q Branch	ADVERT.....	37
TF Services	ADVERT.....	38

Volume 22 ISSUE 1/2
Feb/Mar 2005

Information on The Group

Membership of QUANTA, the independent QL user group is by annual subscription. The Membership secretary can supply full details. Copies of the group's constitution & annual accounts are available from the Secretary. There is an extensive software library. There are active national and international subgroups. Details are given in the Welcome Booklet Disk.

Quanta Committee - 2004/2005

Chairman	John Mason Email: chairman@quanta.org.uk	73 Chewton Common Road, Highcliffe, Christchurch, BH23 5LZ Tel: 01425 275894
Secretary	John Southern Email: secretary@quanta.org.uk	40 Distaff Road, Poynton, Stockport, Cheshire, SK12 1HN Tel: 01625 850067
Treasurer	John Gilpin Email: treasurer@quanta.org.uk	181 Urmston Lane, Stretford, Manchester, M32 9EH Tel: 0161 865 2872
Membership Secretary	Geoff Wicks Email: gwicks@beeb.net	As Below These must be accompanied by an S.A.E.
Head Librarian	John Gilpin Email: librarian@quanta.org.uk	As Above
Acting Magazine Editor	Roy Breerton Email: editor@quanta.org.uk	94 Teignmouth Road, Clevedon, N Somerset BS21 6DR Tel: 01275 871 917
Committee Member (Software Editor)	John Gregory Email: software@quanta.org.uk	20 Flambards Close, Meldreth, Royston, Herts, SG8 6JX Tel: 01763 260 120
Committee Member	Geoff Wicks Email: gwicks@beeb.net	56 Peveril Crescent, West Hallam, Derbyshire, DE7 6ND Tel: 0115 930 3713
Latest contribution submission date for the next issue is 20th June 2004		
Magazine Submissions	and small adds to be on microdrive or floppy disk (Quill_doc preferred) or by email to the editor. Non-QDOS formatted material preferred as ASCII text file or RTF file.	
Library Submissions	John Gregory (see above)	
Missed Issues	John Gilpin (see above)	
Back Issues Requests	Basil Lee Email: basil_lee@btinternet.com	31 Fairdale Gardens, London, SW15 6JW Tel: 020 8789 1976

Quanta reserves the right to publish or reject & edit any material submitted. The opinions expressed are solely those of the contributors. Members private small ads free (up to 50 words). Non-members private small ads (& members after 50 words) 50p per 10 words. Block ads, Single issue Full page £10, Half page £5, Whole Year Full page £50, Half page £25. Terms strictly cash with order. Receipt if requested. All copyrights and trademarks are hereby acknowledged.

The big news this issue is the release of QPCPrint by Marcel Kilgus which appears to solve the problem of printing to Windoz only printers from QPC2. The software is reviewed in this issue by Dilwyn Jones on Page 20. Also, there is a new game called QWORD from the Mellor / Wicks stable, which according to reports has all the 'bells and whistles' and could well be the best QL game ever. Add to this, TCP/IP access for QPC2, the release of QDT, exchange of SBASIC information between Jon Dent and Marcel Kilgus re email access, as well as pointer environment files ptr_gen, wman and hot_rext released by Tony Tebby as freeware, and it can be seen that the QL fraternity is still very healthy!

In this issue you will find the Chairmans report, Treasurers report and a proxy vote form all leading up to the Hove workshop and AGM on April 17th 2005. Unfortunately, due to a clash of dates I will be unable to be there but I do urge you to turn up at what is traditionally a very well run event organised by Roy Wood (and family no doubt!).

I have spoken to Roy lately regarding one or two letters from QL users on the subject of difficulties in using certain hardware / software, and Dilwyn Jones also mentions this subject in the latest issue of QL Today. Roy has decided to write a new series of articles in QL Today titled Start Here. If there is enough demand from Quanta members, I will approach Roy / Jochen Merz to see whether they would agree to the series being reprinted in the newsletter. If you are interested, please let either myself or a committee member know so that we can decide whether the numbers are sufficient. One of the issues discussed by Roy and myself was the frustration felt by more experienced

Quanta Magazine

members in the QL world when you gave your advice freely and generously, only to find that the same questions tend to be repeated at irregular intervals! This could be why Roy has decided to go into print! Maybe Quanta should do the same thing with the HelpLine – preserve a library of queries on floppy / cd rom so that they are always available. Must speak to Geoff Wicks and John Gregory about this topic.

OK, that's it for now, enjoy Easter and the Hove workshop!

Roy

SUBGROUP MEETINGS

THE BIRMINGHAM BRANCH QL & 68000 User Group

This long-running group has moved back to its previous venue, the Queens Head pub in the City Centre. Meetings remain open to Quanta members and non-members alike. The Queens Head is in Steelhouse Lane, Central Birmingham, four minutes walk from Snow Hill main-line railway station and has ample street parking nearby.

Meetings are usually on the first and third Monday of each month (but not on Bank holidays unless the previous one was cancelled for that reason). After your first meeting you're expected to pay £1 each time towards the organisation and monthly newsletter costs - except once a year when the group pays all those who attend a pound instead (We provide food twice a year for those who attend the AGM and the group's birthday party) and at meetings we discuss all sorts of things, QL-related and otherwise, usually from about 8:20pm onwards till 10:30 or later. The group owns QL hardware, a disk library and subscribes to relevant magazines. People can join the mailing list for £3.50 per year, even if they can't attend regularly.

The contact number remains Mike Bedford White's, on 0121 708 2560, anytime after 11am.

Quanta Magazine

EAST ANGLIAN QL USER GROUP

Meetings happen on the 1st and 3rd Sundays of the month at Bramerton Village Hall. Bramerton is just south of Norwich. They start at 1pm and end at 5pm. There is free parking on site, and tea/coffee is also provided free. If you can, please bring your QL system, all welcome.

Tarquin Mills <specyverse@ntlworld.com> or Tel:01603-470399

QUANTA DORSET SUBGROUP

Meetings are held at the Merley Community Centre in Harrier Drive, Merley just south of Wimborne Minster. All are welcome.
Normally on the second Sunday of each month .

John Meadows Tel: 01202 576189, or John Mason, 01425 275894.

LONDON QL AND QUANTA GROUP

We meet in the basement of the Borough Welsh Chapel, 90 Southwark Bridge Road, London SE1. This is almost opposite the junction with Marshalsea Road, at the other end of which, 5 minutes walk away, is the Borough Underground station. Parking easily available in Southwark Bridge Road for road users, cyclists welcome. The hire of the hall is £30 a year, and tea/coffee is provided at a small charge. Please bring your QL equipment if possible, all types welcome e.g. PC portables running emulators.
2.00 p.m. to 6.00 p.m. on the second Sunday of every month.

Malcolm Cadman:Tel. 020 8691 5780; email: ql@mcad.demon.co.uk

NEMQLUG - THE NORTH EAST MANCHESTER QL USER GROUP

181, Urmston Lane, Stretford, Manchester. M32 9EH (Near Junction 7 of M60 Motorway - Was Junction 7 M63 Motorway). Our informal meetings start at 7-00pm and finish at 11-00pm. All welcome.

Meets on the last Thursday of each month (except December).

John/Sarah Gilpin 0161-865 2872 (gilpins@ic24.net) or John/Alison Southern 01625-850067. (tarragon@bigfoot.com)

Quanta Magazine

SCOTTISH QL USERS GROUP

THORNHILL COMMUNITY HALL. Thornhill is 11 miles west of STIRLING on A84 then A873.

Second Sunday of every month from 11.30 am to 4.30pm.

John Sadler 8 Broom Place, Kirkcaldy, Fife KY2 6UE. Email: jms1@supanet.com

SOLENT SUBGROUP

Meets at Botley Market Hall, all welcome. Park at the back and use side entrance.

1st Saturday of the month from 2.00 pm to 6.00 pm.

Graham Evans, tel: 023 8040 3350.

SURREY QUANTA SUBGROUP (SQSG)

Venue is St Giles Church Hall, Ashted. (This is the other side, towards the downs, of the main Epsom - Leatherhead road, up Park Lane which is at the Epsom end of the town).

From 8.00 to 10.30 pm on the last Wednesday of each month, except December.

Ken Bain 01932 347 432 (to midnight), kenb@bcs.org.uk

SUSSEX QL USER GROUP

Currently without a meeting place, anyone interested should contact Keith Mitchell or Roy Wood.

Roy Wood, 01273 386030 or Keith Mitchell, 01903 742263.

QUANTA



Independent QL Users Group

World-wide Membership is by subscription only,
offering the following benefits:

Bimonthly Newsletter – up to 40 pages

Massive Software Library – All Free !

Free Helpline and Workshops

Regional Sub-Groups. One near you?

Advice on Software and Hardware problems

Subscription just £14 for UK members

Overseas subscription £17

Barclaycard: Visa: Access: MasterCard: Accepted

Now in our Twenty Second Year

Further details from the Membership Secretary

**John Gilpin, 181, Urmston Lane
Stretford, Manchester, M32 9EH**

Tel. +44 (0) 161 865 2872

or

Visit the Quanta Web Site

<http://www.quanta.org.uk>

E-mail: membership@quanta.org.uk

Next QUANTA Sponsored Event

Hove Workshop & AGM

Portslade Town Hall

Hove, Sussex

Sunday April 17th 2005

10:00 - 16:00. AGM at 14:00

JOCHEN MERZ SOFTWARE

Im stillen Winkel 12 D-47169 Duisburg

Tel. 0203 502011 Fax 0203 502012

http://smsq.j-m-s.com smsq@j m s.com

J-M-S is moving!

But the only visible change is a new street name! Please note, that the address change will become active on October, 1st., 2004. It will be

Kaiser-Wilhelm-Str. 302

and even the postcode remains the same! It is possible that during the move, phone and internet facilities will stop working for a day or two, but the phone numbers will move with me.

Happy Birthday J-M-S!

J-M-S celebrates its 20th birthday! Yes, time moves on quite fast. 20 years is a very long time in the computer business, so this deserves a very special offer: aimed at everybody who is still using the QL (or cannot use it anymore because it broke down) and would like to upgrade to a faster machine, who misses it on the PC and would like to access QL programs and QL data on disks, we have created a pack consisting of QPC 2 in its current version for Windows 98 through XP, QD 2003 with the new colours, QPAC 2 in the current version and of course FiFi, the FileFinder. Plus the colour utility disk. **This is software worth over EUR 234,-** if purchased separately, and our celebration offer gives you all this **for only EUR 99,90** in the Celebration-Restarter-Pack!! Offer ends January 2005. Plus postage.

You can order via letter, fax, email (SMSQ@J-M-S.COM), or by using our secure order form on

SMSQ.J-M-S.COM

Quanta Magazine

Programme Agenda

QUANTA AND OTHER QL SHOWS PROGRAMME <i>(Italics indicate a provisional date)</i>				
	WEEK 1	WEEK 2	WEEK 3	WEEK 4
MARCH 2005				EINDHOVEN LOCAL - 20th
APRIL 2005			QUANTA AGM - HOVE - 17th	Magazine copy deadline - 30th
MAY 2005		Possible Quanta London show - 6th		
JUNE 2005	Possible Spanish show - 4th	Possible Quanta London show - 12th	EINDHOVEN INTERNATIONAL - 18th "QL2104 After Glow Show"	Magazine copy deadline - 30th
JULY 2005		Possible Quanta London show - 10th		
AUGUST 2005				Magazine copy deadline - 31st
SEPTEMBER 2005		Possible Quanta London show - 11th		
OCTOBER 2005		Possible USA QL SHOW - 8th/9th	EINDHOVEN LOCAL - 15th	QUANTA - QLIS21 - PORTSMOUTH 29th/30th Magazine copy deadline - 31st
NOVEMBER 2005				
DECEMBER 2005				Magazine copy deadline - 31st
JANUARY 2006				
FEBRUARY 2006				Magazine copy deadline - 28th

Quanta Magazine

Radio Rallies in April - May 2005

3 April Northern Mobile Rally (Harrogate)

the Harrogate Ladies' College, Clarence Drive, Harrogate, N.Yorks.

The usual facilities plus a Bring & Buy, catering and transport for the disabled. More information from the rally manager, Gerald, G0UFI, 07734-478080. Web: <http://www.harrogaterally.co.uk>

10 April The Yeovil QRP Convention

Digby Hall, Long Street, Sherborne, Dorset.

Popular get-together of QRP-ers from the south and west of England.

Open 10:00. Free town centre car parking adjoining the hall. Follow black & white 'Town Centre' signs off the A30 Yeovil to Salisbury road. Talks. Trade. Catering. Construction challenge. QRP Convention CW Funrun takes place evening 14-18 March, 19:00-21:00. Rules and rally information available from G3ICO, George Davis, 01935-425669.

Email: george@mudford.fsnet.co.uk

10 April Cambridgeshire Repeater Group's Annual Rally

Bottisham Village College, six miles east of Cambridge. Access via A14, A1303. Open 10:00. Entry UKP1.50. Car boot sale. B&B. Talkin 145.550 MHz. Details Paul, G0LUC, 01462-683574.

Email: g0luc@btinternet.com. Web: <http://gb3pi.org.uk>

24 April Aldridge & Barr Beacon ARC's Annual Surplus Radio & Electrical Sale

Anchor Meadow Middlemore Lane, Aldridge, W.Midlands.

Admission GBP1.00 with raffle. Open 10:00. Trade. Catering. Talkin 145.550 MHz. Details: Doug, 01543-571269. Web: <http://www.g0neq.co.uk>

24 April Andover RAC Spring Boot Sale

The Village Hall, Wildhern (OS SU351510).

Open 10:00. Admission GBP1.00. Trade. Catering. Disabled facilities. Talkin 145.550 MHz. Details: Terry, G8ALR, 01980-629346.

Email: g8alr@ukgateway.net

24 April West London Radio & Electronics Rally

Kempton Park Racecourse, Sunbury-on-Thames, Middx.

Quanta Magazine

Open 10:15. Trade. Flea market. Lectures. Catering. B&B.

Details: Paul, M0CJX, 01737-279108. EMail: m0cjx@radiofairs.co.uk

Web <http://www.radiofairs.co.uk>

2 May Mid-Cheshire ARS Rally

David, G4XUV, 01606-77787

2 May Dartmoor RC Radio Rally

Dartmoor RC Radio Rally, Tavistock College, Tavistock. Devon. Same new location as last year. Disabled access but no dedicated disabled parking.

However, there is adequate parking around the site. Trade. B&B. Refreshments. Open 10:30/10:15. Talkin S22. Come and visit beautiful Dartmoor, ideal for picnics, so why not bring the whole family along?.

Details: Ron, G7LLG, 01822-852586

8 May The Magnum Rally

The Magnum Leisure Centre, Irvine, Strathclyde. Located in Irvine at the Harbourside area, which is signposted from all major roads including the A71, A737 and the A78. By road the Centre is 30 miles from Glasgow and 15 miles from Ayr. Open 10:30 to 16:00. Entry GBP3.00/kids free.

Entrance via main entrance to the Magnum which is over the bridge and in the main doors. You do not need to pay at the desks for the Magnum as the entrance as the rally entrance money will be taken at the bottom of the stairs just before you enter the rally and not by Magnum staff.

Disabled visitors and carers can enter the rally through the disabled entrance on the ground floor round the corner at the left hand side of the building. The disabled entrance is via the glass doors which are next to the loading area. There are disabled parking spaces at the front of the Magnum. Catering upstairs in the centre and there are also plenty of drinks machines. Table bookings and details from Helen, MM0HLN,

EMail: helen@magnumrally.co.uk

Further info on the website: Web: <http://www.magnumrally.co.uk>

15 May Midland ARS Drayton Manor Radio & Computer Rally

Norman, G8BHE, 0121-422-9787 or 07808-078003.

EMail: nlgutteridge@aol.co.uk Web: <http://www.midamradio.co.uk>

Quanta Magazine

Q-Celt Computing

The Falconry, Glenmacnass, Glendalough, Co.Wicklow, Ireland.

Tel: (+353)-404-45319 Fax: (+353)-404-45558 Email: darren.branagh@boimail.com

QL Compatible CD-ROM's

- The Dilwyn Jones Collection (all of Dilwyns Programs on one CD!!).....**Now £20**
- Z88 Heaven Collection (thousands of Programs for the Cambridge Z88 Laptop).....**Now £8**
- Famous Faces (Linedesign caricatures of famous people).....**Now £10**
- Linedesign Clipart Collection (600Mb. of Linedesign files!!).....**Now £10**
- ZeXcel Spectrum Emulator CD (the QL Speccy Emulator and ton's of Games)...**Now £10**
- The QL Documentation CD (hundreds of useful text files on QL Subjects).....**Now £5.**
- The Emulator CD (QL emulators for various systems, and a thousand free programs).....**Now £5**
- The Religion CD (for the scholar; lots of various religious texts).....**Now £10**
- The QL-CDR (By Gerard Plavec, lots of freeware programs).....**Now £5**

QL 2002 – The DVD Movie!!

A professionally edited and made DVD documentary (over an hour long!!) on the current QL scene, containing the recent QUANTA meeting and AGM in Manchester, and interviews with Bill Richardson and Tony Firshman. Complete with Outtakes, and a comprehensive trader directory and QL info slide show. The entire QL EMULATORS CD-Rom is also included FREE on the DVD disk, so you get hundreds of programs for free!! Will work on PC or Mac DVD drives and all standalone DVD Players.

PRICE REDUCED!! - Now Only £20 Sterling plus P&P.

NEW PROGRAM – LAUNCHPAD!!!

A Brand new program from Dilwyn Jones, one of the best QL programmers around. It's a Program Launching front end, and allows you to assign Icons for your programs, to have your own desktop login, preserve settings, have multiple users, and other great ideas. It has been improved, a lot of bugs found and fixed since the first release, and is very stable. A very useful program.

Only £20 !!

We also have a lot of Older QL Hardware (some quite rare) for sale – email for details. We have a fully working Thor Computer for sale, Various QL Monitors, And some older software. If you are looking for something in particular, email us – we may have it!!

We are also planning the next Irish QL Show Weekend for the Summer of 2005 – watch this space for more details!!

These two programs can be used to separate plurals and non plurals from a given word list. By the way thanks to Geoff Wicks for his help. These programs while not perfect saved me two years or more work sorting over 400,000 words, I did it in one evening and an early morning

Type out the file mywords using an editor or perfection. Save the file myword or rename a file you have and call it myword, if using perfection DON'T use save but use f3 and i. Run the two programs which will generate two files:-

- 1 file pluralstest
- 2 file nonpluralstest

pluralstest will have all words ending in s
nonpluralstest will have all words not ending in s

plurals will pick up most plurals but beware of words ending in s that are not plurals to mention two penis and compass.

```
50 DIM ITEM$(20)
100 OPEN_NEW #6,flp1_nonpluralstest
101 REMark DELETE LINE 100 AFTER FIRST RUN AND REMEMBER TO
TYPE CLOSE #6 AND CLOSE #5 WHEN FINISHED
105 OPEN_IN #5,flp1_mywords
110 FOR N= 1 TO 1E18
120 INPUT #5,ITEM$
130 IF ITEM$ ( LEN (ITEM$))<>'s' THEN PRINT #6,ITEM$
140 END FOR N
```

```
50 DIM ITEM$(20)
100 OPEN_NEW #6,flp1_pluralstest
101 REMark DELETE LINE 100 AFTER FIRST RUN AND REMEMBER TO
TYPE CLOSE #6 AND CLOSE #5 WHEN FINISHED
105 OPEN_IN #5,flp1_mywords
110 FOR N= 1 TO 1E18
120 INPUT #5,ITEM$
130 IF ITEM$ ( LEN (ITEM$))== 's' THEN PRINT #6,ITEM$
140 END FOR N
```

Geoff Wicks has kindly made two of his former commercial programs available as Freeware. They are Style-Check and QL-Thesaurus. The versions are for 3.01 Style-Check and 4.02p for QL-Thesaurus. You will need discs SP51 and SP52 respectively. Also included are versions for running when the Pointer Environment is not present.

Dilwyn Jones has submitted his Freeware program that will display the characters of any font file that is in QL format. It also displays the code of the lowest and highest character in the font. The program is for use with the Pointer Environment and is in Dilwyn's Launchpad house-style. CSIZE 1,0 is used for the display which means that 'fat' fonts are also catered for. The program version is 1.00; ask for disc UG 29.

Finally a program from a new author, Philip Warne. Proprint is a printing utility for printing Quill 'doc' or 'lis' files in justified proportional font on esc/P2 Epson printers, incorporating all the features of Quill and a few which Quill does not have. The disc is PF 06.

Question: QPC2 is frequently upgraded and configuring each new version is a time-consuming chore. Is there an easy way to do this?

Answer: If you have customised your version of QPC2 you have many things to configure. On the initial configuration screen there are 8 options for win_ drives, 8 for dos_ drives, 8 for serial devices and 4 for parallel devices each of which has 5 possible settings. Screen resolution, colour mode, sound, memory and country code are also configurable from this screen.

In total QPC2 has over 120 configurable options, and over 50 of these are the window manager colours. However you cannot configure these colours via the configuration screen, and this gives a clue to the question's answer.

The file SMSQ.BIN contains a configuration block that can be amended using Jochen Merz's program MENU CONFIG.

Before you install a new version of QPC2 run the Menu Config program. Choose the Config (F3) option, navigate to the dos_ folder containing the QPC2 files and then choose SMSQ.BIN. Now choose the Learn option. Next the INF-file (F2) option and save the INF-file to a floppy disk.

You can now install your new version of QPC2. (You might want to make a back up copy of your old SMSQ.BIN version first, just in case you make a mistake in configuring.)

When you have installed the new version of QPC2, run the Menu Config program. Choose the INF-file option and load the file you have saved to floppy. Now choose the Config option and navigate to the new SMSQ.BIN file. Click on the update option and save the changes back to the file.

Your new version of QPC2 has now been configured the easy way.

Quanta Magazine



QL Today

The magazine for all QDOS SMSQ users
published bi-monthly.

Re-subscribe!

Issue 6 of Volume 9 will be out in mid April.

This will take us to the verge of 10 years of publication. The Longest running independent QL publication ! We thank you all for your support these last years and hope you will stay with us by re-subscribing.

Part two of Start HERE! will concern Hard drives
It will also feature news, reviews and all the other good stuff.

If you have yet to try QL Today why not drop us a line and ask for a sample issue ?

You can subscribe by contacting :

Jochen Merz Software

Im Stillen Winkel 12, 47169 Duisburg, Germany

Tel +49 (0) 203 502011 Fax +49 (0) 203 502012

email : jmerz@j-m-s.com

Q Branch

20 Locks Hill Portslade, Sussex, BN41 2LB, UK

Tel +44 (0) 1273 386030 (eves) Fax +44 (0) 1273 430501

email : sales@qbranch.demon.co.uk

Web: www.q-v-d.com/qltoday

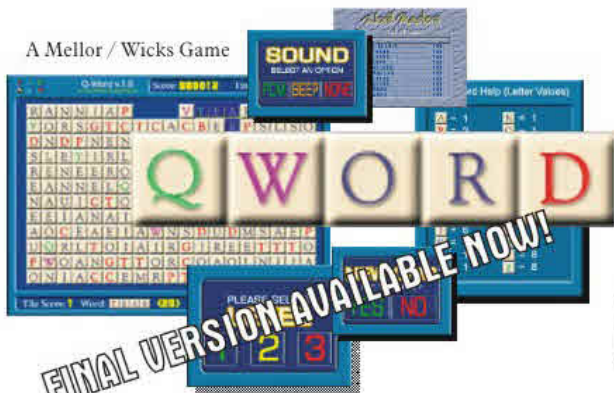
RWAP Software

in cooperation with



PRESENTS...

A Mellor / Wicks Game



for the Q40 & Q60
(And Aurora/SGC)



for QPCII & QXL

FINAL VERSION AVAILABLE NOW!

Scrabble® Meets Tetris® Meets the clock!

In glorious colour and digital sound! (Aurora too!)

For the first time in the history of the QL, a truly high colour, digital sound *really* addictive game, in superb 1024 x 512 (640 x 480 on QPC/QXL and 512 x 480 on the Aurora) high colour. SMSQ/e is NOT needed for the Aurora (and soon for the Q40/60) but it is recommended. The innovations are too many to mention but let's just say that the surprises start with its user-friendly installer which is unlike any other!

The object of the game is to clear letter tiles from the grid by using them to form words. Points are based on the length of the word and the letters used. Simple, yet addictive!

PRICES

- QWord for QPC2/QXL (CDROM) £20
- QWord for Q40/Q60 (HD FDD) £20
- QWord for Aurora/SGC (HD FDD) £20
- Add Pword £10
- (500,000 word UK dictionary)

LANGUAGES

Each version is supplied with one dictionary (normally the OSPD UK English Scrabble Dictionary). However, QWord can also be configured to use the following alternative language grids:

Dutch, English (USA), English (UK), French & German

If you want more than one version of QWord (eg. to play on Aurora as well) - add £5 for each additional version.

Specialist QTyp dictionaries for each language have been produced, which removes the need for accented characters in the foreign languages.

You can choose ANY one dictionary to be supplied with QWord. Alternatively, order additional dictionaries for £2 per dictionary.

SPECIAL OFFER! FOR AURORA/SGC USERS

BUY Q-WORD WITH Colour Drivers version of SMSQ/e for the SGC

!!ONLY £50!!

RWAP Services

28 Oak Road, Sheffield, Walsall, West Midlands WS4 1RQ, United Kingdom Website: <http://www.rwapsoftware.co.uk>

We accept:



(PayPal/Nochex Payments to RWAPSoftware@aol.com. Cheques in £ sterling made payable to R. Mellor)

February 2005 is a very important for the QL fraternity.

It marks the 21st Anniversary of the launch of the Sinclair QL by Sir Clive Sinclair, and the 21st Anniversary of the founding of QL Users and Tinkerers Association (Quanta) by Leon Heller and Brian Pain. Both events took place in February 1984.

Who would have predicted in 1984 that there would still be a lively QL community in 2005.

Quanta will be celebrating both of these Anniversaries next October with a Major International Workshop – “QL is 21” – at Portsmouth; but more about that anon.

The aims and objectives for 2004/2005 have been to maintain the services to members at 2003/2004 levels whilst carrying out a structured review of Quanta so that a development plan can be based on ascertainable facts and not subjective supposition.

This is the first time in the history of Quanta such a review has been undertaken.

It has been carried out in two parts – firstly a Survey of all members to discover the hardware and software they are using, their use of Quanta Services and the Internet, their perception of the direction Quanta should go and their willingness to help in moving Quanta forward; and secondly a Survey of the Committee to ascertain how well it is suited to present needs and what changes may be needed.

The Membership Survey was launched simultaneously in the October / November 2004 Magazine and on the Quanta Website. Time constraints meant that Quanta could only put the Project Assessment forms on the site in downloadable formats.

Tony Firshman was quick to spot the advantage of members being able to respond online. Quanta was pleased to accept his most generous offer and this facility was available on both his own & Quanta’s website in under 3 days. Thank you, Tony.

To my great pleasure and delight 63 members, and 52 other QL users making a total of 115 respondents in all participated. Quanta thanks all those who took the time and trouble to take part in this Survey. You have provided sufficient data to ensure that a meaningful assessment can be made.

The Survey ran for two and a half months. It closed on 15th February, and analysis is now in progress. Reports will be made at the Annual General Meeting, in the Magazine, and on the website. That is not to say that acting on the analysis will be put on hold until after the AGM.

Quanta Magazine

Subscription rates for 2005/2006 have been reviewed having regard to the Financial Report for 2004, and it has been decided that it would be inappropriate to vary the present rates of £14 for Ordinary Members, Overseas Members £17, and £5 for Associate Members.

Once more there have been loud noises about spending Quanta's MONEY but on WHAT? Those who made those noises have not supported them with constructive suggestions.

Quanta has continued to be, and is willing to support financially software and hardware development projects beneficial to members.

If you desire funding it is up to you to ask. Quanta cannot fund a project for which no request for assistance has been made.

From the start the principal means of communication with members has been the Magazine. It was published and sent out on a monthly basis until about 18 months ago when ongoing shortfalls in copy received resulted in a decision to go bi-monthly.

Whilst this change has made it easier to fill a given issue more copy is needed from ALL Members. Even an article of three hundred words would be very welcome. Some members write articles of over 1000 words for another QL related newsletter, and that begs the question of why are those members not submitting articles for Quanta Magazine?

Having looked at the cost of producing the magazine it has become apparent that costs could be significantly contained if those members who have internet facilities received their magazine electronically.

Committee have agreed to carry out a trial of receiving the magazine electronically themselves. Subject to that it is intended to offer members the opportunity to receive their own copies electronically. This will be optional and members who do not elect to receive their copy electronically will continue to have it posted to them as now.

At the same time it is intended to move from an A5 to A4 format. This change is cost neutral and brings the format into line with current general scientific journal practice.

Near the start of the Quanta year it became apparent that the longstanding arrangements for the desired dates for all Quanta Workshops and QL Shows worldwide to be cleared with Quanta before going firm on a given date had fallen into disuse with the result that near conflicts were occurring. Committee decided that a "Workshop Coordinator" (including QL Shows) was needed. The job was assigned to Geoff Wicks and the problem seems to have been resolved.

A rolling programme of Quanta Workshops and QL Shows will be included in the magazine, and on the website.

Quanta Magazine

A previous Committee perceived advantage in electronic communications as a means of reaching members more quickly than is possible by traditional snail mail. To this end they set up a website. It had links to pages giving newsletter contents, subgroup meetings, workshops, and listings, also a facility to email Committee Members direct. Within a very short time the email links were becoming overwhelmed with spam. Also the ISP ceased to trade.

An arrangement was made with Bruce Nicholls of “Quo Vadis Design” and the site relaunched as “www.quanta.org.uk” – The immediate spam problem was eliminated. Recently there have been some spam attacks but not on the scale encountered with the original site.

Last autumn it was discovered that some pages were in need of updating, and that the presentation had become dated. Clearly a major overhaul was more than due. On making further enquiries it was found that previous committees had not made specific provision for the maintenance and update of the site.

There has been updating to the content of the site but the real need is for a revitalised website and the content for that has been defined.

However a “Web Editor” is needed to bring this to fruition, and to maintain the revitalised site. A volunteer is wanted to do this vital task. Will YOU HELP – Yes I mean YOU. If so please contact me.

In his Chairman’s Report for 2003/2004 my predecessor, Robin Barker, identified the need for an email Forum in which Quanta members could discuss Quanta specific issues.

To that end it is proposed to set up a mailing list site.

To coordinate both the updated website and the mailing list site a task of “Ecomms” has been established, and its terms of reference specified.

The Committee Survey revealed a need to vary some duties to better meet present day requirements.

To that end it is intended in 2005/2006 to –

- a) Discontinue a separate duty of Membership Secretary and to include it with the duties of the Treasurer.
- b) Discontinue a separate duty of Software Editor and to include it with those of Head Librarian

Turning to the question of how to keep the Committee refreshed and at the same time maintain continuity. Like many others of its time Quanta’s Constitution envisages that a completely new committee will be elected each year. This works well whilst a club or society is less than 7 years old, and its members are still very enthusiastic. However

Quanta Magazine

by then new committee members have become difficult to find and clubs rely on a limited number of long term members to run its affairs. They have run out of new ideas and the club wilts.

The rules of many clubs now provide that committee members may serve for not more than 6 years without standing down for at least one year before seeking re-election.

This has been found to provide a good balance between continuity and refreshment of committees.

Quanta Committee believe that Quanta should adopt such a policy and they recommend you to approve Special Resolution No 1.

The question of the size of the Committee has been addressed with particular consideration being given to membership numbers, and the nominations received for 2005/2006. The conclusion reached is that it should comprise the three officers together with three other members. The new Committee will need to co-opt a member to be the Magazine Editor.

The outgoing Committee are concerned, however, that there could be difficulty in achieving the present quorum of “four” for a Committee Meeting of four with a Committee that may have less than six members. To obviate this they consider it necessary to vary the set quorum to be “two or half the number of Committee members whichever is the greater.”.

They recommend you to approve Special Resolution No 2.

Roy Brereton and John Southern have both decided not to stand for re-election to Committee for 2005/2006. Both will sorely be missed

Roy has been on Committee for a number of years during which he has performed well, successively as Head Librarian, Chairman, Secretary, and most recently as Magazine Editor. I think that we all agree that his efforts in that last role have saved the Magazine from extinction.

John Southern has had two shorter spells on the Committee, firstly as Sales, and during 2004 as Secretary. Both jobs have been carried out with John’s usual good temperament, joviality, and efficiency. Thank you John for your service.

Sarah Gilpin has been nominated to serve as Secretary, but nobody has been nominated to serve as Magazine Editor, and the new Committee will need to address this as a matter of some urgency.

Both Geoff Wicks and I have been nominated for the post of Chairman so the AGM will need to vote on that.

The essential research has been done to enable Quanta to move forward in 2005/2006 on the basis of ascertainable facts - not subjective supposition.

It is your choice as to whom you entrust with this. You have a Vote – Use IT.

Quanta Magazine

QUANTA Membership Secretary's Report for Year 2004

As at 31st December 2004, the QUANTA Membership is made up as follows:

	UK	OS
Paying Members	214	38*
Associate Members	2	NIL
Non-paying Members		
Committee Members (past & present)	9	NIL
Trading Advertisers	4	2
Honorary Members	<u>2</u>	<u>1</u>
TOTAL MEMBERSHIP	<u>231</u>	<u>41</u>
COMBINED TOTAL MEMBERSHIP		272

Anticipated income	214 @ £14 (UK)	= £2,996
	38 @ £17(OS)	= £646
Expected Credit Card Fees @ £1		= <u>£20</u>
Total:		<u>£3,672</u>

* This figure includes a new member from USA – Welcome Delwin.
(Is this the beginning of a new trend? Perhaps Quanta is worth joining!)

John Gilpin.
Honorary Membership Secretary.

Quanta Magazine

		<u>QUANTA Income and Expenditure Account</u>		
		<u>for the Year Ended 31st December 2004.</u>		
	2003			2004
£	£			£
		INCOME		
	4,194	Subscriptions		3,824
	0	Sale of Back Issues		0
	35	Sale of Goods to Members		95
	260	Advertising		243
	93	Library Receipts		8
	726	Donations		330
	<u>5,308</u>			<u>4,500</u>
		Interest Received	323	
		Less: Taxation (Plus refund)	<u>13</u>	
	269			310
	<u>5,577</u>			<u>4,810</u>
		EXPENDITURE		
	1,101	Printing Costs		1,453
	839	Postage		876
	0	Purchase of Goods for Resale	0	
	88	Plus: Stock Movement	<u>94</u>	
	88			94
	15	Library Expenses		0
	50	Subgroup Support		50
	1,156	Workshops and Fairs		1,669
	54	Committee Meetings		511
	71	Stationery		68
	61	Telephone		88
	90	Accountancy & Audit		90
	34	Bank and Credit Card Charges		37
	600	Insurances		100
	6	Royalties Payable		41
	49	Sundries (Web Site)		39
	<u>4,214</u>			<u>5,116</u>
	1,363	SURPLUS / (DEFICIT) FOR THE YEAR		-306
	<u>1,363</u>			<u>-306</u>
	1,363	To/(From) QUANTA Accumulated Fund		-306
		John Gilpin (signed)		
		Honorary Treasurer		✍

Quanta Magazine

QUANTA Balance Sheet as at 31st December 2004.

2003			2004	
£	£		£	£
		<u>FIXED ASSETS</u>		
	1,075	Equipment at Cost		1,075
	-1,067	Less: Depreciation		-1,067
	8			8
		<u>CURRENT ASSETS</u>		
	350	Stock of Goods for Resale	256	
	150	Prepayments and Debtors	164	
		Bank Accounts:-		
	11,079	HSBC High Interest Deposit Account	11,338	
	5,730	HSBC Current Account	5,684	
	8	Alliance & Leicester Girobank Current Account	0	
	0	Cash In Hand	1	
	17,317			17,443
		<u>CURRENT LIABILITIES</u>		
	439	Accrued Charges and Creditors	916	
	647	Subscriptions in Advance	602	
	1,086			1,518
	16,231	NET CURRENT ASSETS		15,925
	16,239	TOTAL ASSETS		15,933
		<u>FINANCED BY ACCUMULATED FUNDS</u>		
	14,876	Balance brought forward		16,239
	1,363	Surplus/(Deficit) of Income for the Year		-306
	16,239			15,933

AUDITOR'S REPORT TO THE MEMBERS OF QUANTA:

I have examined the Income and Expenditure Account and Balance Sheet for the year ended 31st December 2004 and confirm that they are in accordance with the books and vouchers of the Association and the explanation and information provided.

Signed: Catherine Banks

Name & Address:... Catherine Banks

2, Anchorage Road,
Urnston,
Manchester. M41 9WW

Quanta Magazine

QUANTA Treasurer's Report for Year 2004.

During 2004, the items representing both Income and Expenditure have shown small increases and decreases over the previous year. Due mainly to the continuing fall in membership (10.8% in 2004), our overall income for the year fell by a more or less proportional amount (£767 – 13.7%).

Our expenses, as expected, had reached a minimum during 2003, and therefore inflation and other factors took hold and increased our expenditure for 2004 by £902 despite reducing our insurance cover by £500. Printing costs, Workshops and fairs and Committee meetings all rose considerably over the previous year.

Why? Printing cost increases were caused by the issue of the full six bimonthly magazines against only five in 2003. The new committee met on more occasions during 2004 than they did in 2003 in an effort to support the membership more fully. Although costs were minimised by holding meetings at or following workshops, the increase represents the cost of travelling by all committee members whereas for a workshop, only a couple of committee would normally be expected to attend. The introduction of the Norwich Workshop and increased costs at other venues caused the increase in workshop costs.

With reduced membership, I cannot foresee Quanta maintaining a trading surplus in the future without reducing even further the expenses incurred on the magazine and at workshops. The possibility of reducing postage costs (used mainly to distribute the magazine) is being considered. However, it will be up to individual members to decide whether they wish to receive a posted hard copy or an electronic copy of the magazine. The printing costs are already as low as can be expected at about £0.75 per copy.

It is, therefore, with regret that I have to report a deficit of £306 for 2004 reducing our accumulated fund to £15,933.

Signed: John Gilpin.
Honorary Treasurer.

QPC2 users now have a printing facility which will work wonders with Windows-only printers. Marcel Kilgus has grabbed the bull by the horns with this excellent little package which works as a printer filter which sits between QPC2 and the Windows printing system, accepting and converting Epson ESC/P2 printer control code data in and outputting it in a format suitable for printing to a Windows printer. Thought that those cheap Windows-only printers could not be used with a QL system? Well, that's no longer true as far as QPC2 users are concerned.

Sadly, the filter is only suitable for use with QPC2 as it relies on Windows (it is essentially a Windows program) and QPC2 is currently the only QL emulator running on Windows with the facility to use such a 'printer filter'. It can also double up as a virtual printer driver which can work to a degree with DOS programs and possibly other emulators, although this is much more difficult to set up.

Now you might ask why it has taken so long to address the dreaded printing problem. There are many cheap printers out there (usually inkjet printers) which do not understand the normal 'Epson' printer control codes which we are used to on the QL scene. Such printers are usually cheap only because the intelligence has been removed from their insides – printing is organised by the operating system and printer drivers which takes care of converting text and graphics into raster graphics to make up a page. As PCs grew ever more powerful and the call for cheaper printers became louder, manufacturers stripped the intelligence from these printers and relied on Windows and the host computer to drive them instead. Such printers can only accept a continuous stream of graphics data which has to be preformatted by the operating system and printer driver. Even Windows requires a different driver for every type of printer – even two different Epson printers may require different drivers and not understand what we think of as 'Epson' control code sets from older Epson printers. Knowing the complexities of these things (they are not just mere simple printer drivers as we QLers know them) it is hardly surprising that nobody has embarked on this task as yet on the QL scene.

So here we had a dilemma. Plenty of cheap printers about, very few of them could be used from QDOS or SMSQ (or even DOS on a PC in many cases). There was very little chance of getting drivers written specifically for QL systems – the manufacturers would not be willing to cater for a relatively small market like ours and no doubt by the time we'd written a driver for a particular type of printer, the manufacturer would have moved on and we'd be back to square one again.

One possibility was porting Linux drivers and adapting those for QDOS and SMSQ, and this was considered. Postscript is widely used and writing a program to convert

Quanta Magazine

files using Epson control codes to postscript might have allowed the use of Postscript utilities such as Ghostscript for example (which exists for the QL, thanks to Jonathan Hudson). Tarquin Mills ported such a program but such facilities, although technically good, are a little clumsy since they make printing a multi stage process – you have to generate a file by printing to a file instead of printer, run it through a utility to convert to Postscript or whatever system is used, then finally print the resulting Postscript file with something like Ghostscript. It works, but is a bit long winded for many people.

Right from the early days of QPC2, the author had built in a facility to allow the use of a print filter which sat between the emulator and the Windows printing system. Another software author in Germany had started work on an Epson printer filter some time ago, but the project was never fully finished. So Marcel wrote his own and QPCprint is the result.

You get a manual, some fonts and the filter program called, unsurprisingly, QPCprint. I have been using a test version, prior to the official release, so minor details may change before you read this.

The first thing you need to do, obviously, is read the manual. This is especially important with QPCprint because it is something that is new to us and installation is not quite intuitive unless you know about printer filters for QPC2.

The file called QPCprint.exe must live in the same directory as QPC2 itself. When you first run it, it sets up a file called QPCprint.ini which contains the setup data. Any fonts supplied or which you wish to supply yourself should be known to Windows – add them via the Fonts menu in Control Panel as required in the usual way for Windows. Don't just copy them to the QPC2 directory, it's best to use the Add New Fonts facilities of Windows. In general, if Windows can see the fonts, so can QPCprint. The manual helpfully suggests that if you have some Windows programs by Corel there are many commercial fonts in these packages which are highly suitable for use with QPCprint. It lists good examples of both freeware and commercial fonts which are well suited to the 12 ESC/P2 fonts handled by QPCprint.

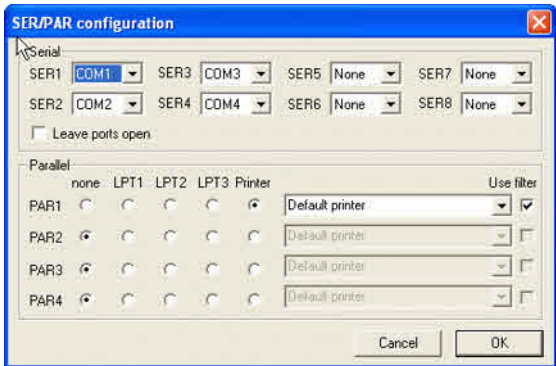
The QPCprint manual has some helpful suggestions about which fonts to use to most closely match the 12 fonts (typefaces is a more accurate term in this context) defined by the Epson ESC/P2 standard, which are: Roman, Sans serif, Courier, Prestige, Script, OCR-B, OCR-A, Orator, Orator-S, Script-C, Roman T and Sans Serif H. Some printers will natively support some of these typefaces – Marcel Kilgus lists those available on his Stylus 740 printer, for example. He also lists some equivalents and close equivalents among the commercial and freeware Windows fonts he is aware of. For example, the Roman typeface can be represented by the free Luxi Mono typeface or by the Century Schoolbook Mono font. Many of the ESC/P2 fonts are monospaced

Quanta Magazine

by default, with proportional being switched on and off by sending the appropriate control code to the printer within the ESC/P2 environment.

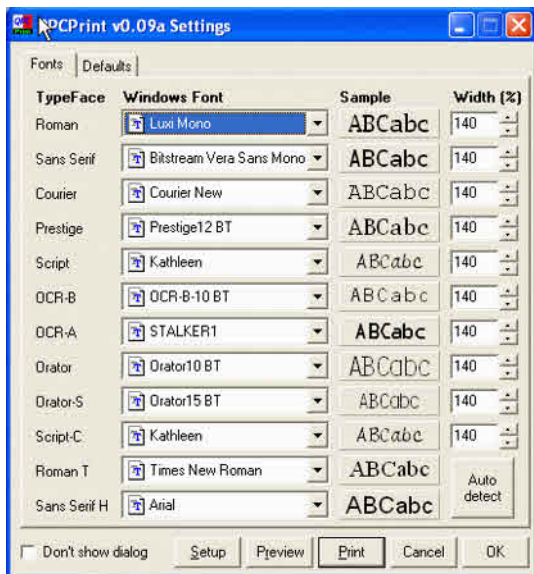
Your QL programs need to use an Epson printer driver. Preferably ESC/P2 standard, but by and large older Epson-compatible printer drivers use codes which are essentially a subset of the ESC/P or ESC/P2 standard. Most QL programs either default to or only have Epson-standard printer drivers or have Epson drivers available so 99% of QL programs should work with this filter, the only ones which I have encountered so far which don't work with QPC2 are programs which are specific to other makes of printer, for example, my own Deskjet-A5 program which is specific to HP Deskjet printers.

Figure 1 – Telling QPC2 to use the QPCprint filter in the configuration dialogue.



QPCprint takes in text or graphics data containing Epson control codes and as if by magic chews these up and converts them to the format required for sending to the printer via the Windows printing system. Amazingly, it handles both text and graphics and mono or colour printing. It will even handle the screen dumps generated by the SDUMP device available on the QL. If you set QPC2 up so that PAR uses the Windows printer filter (see figure 1 – tick the “Use Filter” box in the Ser/Par configuration dialogue for QPC2) whatever is printed to PAR goes via QPCprint automatically. The first time you print something to QPCprint, its own configuration dialogue window comes up – see figure 2.

Figure 2 – QPCprint's configuration screen



Quanta Magazine

In this screen you can select which actual fonts are to be used to represent the theoretical ESC/P2 fonts. By clicking on the down arrow symbols next to the Windows Font names you can assign any Windows font to correspond to the ESC/P2 equivalent. In some cases, some of the normal Windows fonts correspond exactly to the equivalent ESC/P2 font, for example, the ubiquitous Arial and Times New Roman fonts in Windows correspond to the Roman T and Sans Serif H fonts of ESC/P2. Since QPC2 is always used with Windows, and these fonts are present in all versions of Windows with which QPC2 can be used, there is no need to do anything else with these two fonts except ensure they are the ones used. Where fonts do not exactly match, you may need to adjust the width settings because of the different character spacings. There are little up/down arrows to manually adjust these values, or there is an Auto Detect button which will try to sort it out automatically for you – the manual suggests trying an initial width setting of 140% as a good starting point. In practice, you'll find that either this works well with the suggested settings for the fonts in question or a little bit of trial and error will soon find better values.

Clicking on the Defaults tab lets you specify which code pages to use for the ESC/P2 character tables. The manual suggests that “most proper applications will however set their own code pages at the beginning of a print job anyway.”

Along the bottom of the screen you'll find the command buttons for the next steps to take.

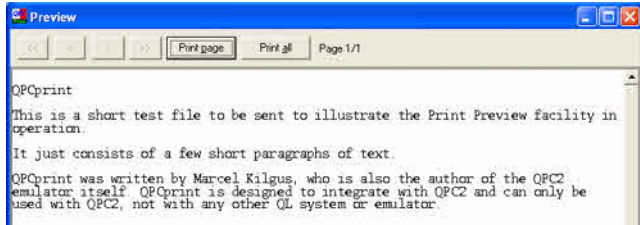
The “Don't show dialogue” tick box does what the name implies – next time you use it the configuration screen won't pop up, it'll just print straight to the printer (if you do want to change settings just execute qpcprint.exe direct from Windows which will force the dialogue to appear). In the early days you'll want the screen to appear as you test and alter the settings to get the system to work the way you want it to with the fonts you have chosen.

The Setup button brings up the setup dialogue box for your printer's printer driver. This lets you set printer-specific settings (e.g. use save toner mode on laser printers).

The Preview button brings up a preview screen which lets you see roughly what the printed output will be like. If happy, you can click on the print (current page) or Print All buttons, or step back and forward through the pages in the preview window. This can obviously be useful if you are printing a long and complex file and wish to check it's what you expect before committing to a long print run and wasting paper and ink.

Quanta Magazine

figure 3 – the print preview screen



Print will obviously start printing, whereas Cancel will stop QPCprint from going any further, so you can go back to QPC2.

In terms of day to day use, that's all there is to it. But you have to be aware of a few limitations which are to do with the way printing works. When using Printer Filters, all printed output is sent (without action on the user's part) by QPC2 to a temporary file on disk. QPCprint reads this temporary file when QPC2 has stopped printing and begins the process of converting the file to send to the printer. So printing only really starts after the QL program has finished printing (i.e. the temporary print file is closed) so if a program is slow printing, or it's a very long printing session, it might appear that nothing is happening until your program has finished printing. More than once I thought it had crashed, only to find it was waiting for the program in question to finish printing.

Also, if the QL program prints its output in several goes (for example, a program which opens a channel to print a page, prints the page, then closes the printer channel at the end of each page (i.e. each page is printed as a separate print job, so instead of one printing session with 6 pages you actually get 6 printing sessions of 1 page as far as QPCprint is concerned) there can be difficulties with QPCprint not remembering settings between each print job, as though the printer had been switched off and forgotten its settings between each page. It's difficult to see how this can be avoided given the way in which printer filters work – the manual suggests printing to temporary files, possibly merging these and sending them to the printer as one job lot.

The QPCprint manual goes into some details about the aspects of the ESC/P2 printing standards not supported. User defined printer graphics characters are not supported, since these would have been stored in the printer normally. For Ornament text effects, the "outline" setting is ignored, although the "shadow" effect does work. The preliminary manual which I was given stated that colour is only supported in text mode. It would appear, however, that my manual might be out of date since QPCprint did seem to manage colour graphics when I set up SDUMP to print some mode 8 screens for me, so this may just be an example of a program which develops rapidly in the early days, more rapidly than the manual. Software authors are not always well known for being good manual writers no matter how good or bad their software might be (in practice, Marcel seems to have made a good job of the preliminary manual

Quanta Magazine

despite his occasionally stated standpoint of absolutely hating the job of writing manuals).

Most of the common graphics mode are supported, such as the traditional single, double and quad density (60 to 240 dots per inch) via the ESC K, ESC L, ESC Y and ESC Z code sets, along with the ESC * selectable modes up to 360 dots per inch and the ESC . n modes including RLE compressed and TIFF modes up to 1440 dots per inch. 9-dot graphics via ESC ^ is also supported. Should just about cover most graphics that QL software is likely to throw at it.

ESC/P2 supports a control code set for printing barcodes. These are used by a few more specialised printers only. My Epson Stylus 880 does not, for example. QPCprint does not support these barcode printing codes, which is probably no great loss as if you wanted to generate barcodes for your business you'd be likely to have a specialist printer anyway.

A list of international character sets supported is given (fairly extensive) although it depends on the fonts used including the specific characters (otherwise you'll end up with an empty box or space instead of the character in question). Paper bins can be selected (up to 9 bins if your printer has that many!) although you may need to experiment a little to find which 'actual' bin corresponds to which 'bin' number.

QPCprint adds a command not specified in ESC/P2 but borrowed from a GQ command set for laser printers to draw horizontal or vertical lines using the ESC “_” command, which is fully explained in the manual so that if you wish to use it you can add the command to your QL printer drivers as appropriate. You can specify line type (solid, dotted, dashed), horizontal or vertical, thickness and length.

There are one or two other fairly minor points to note but on the whole you'll find you have to do little but print and wait with this program.

As I was writing this review, Marcel announced that the program could be used as a virtual printer driver. That meant nothing to me until I saw the instructions for this function and suddenly realised it greatly increased what QPCprint could be used for. While QPCprint has solved the printing problems at work when I use QPC2, I was still unable to get DOS programs to print and I had half hoped that at some point Marcel might be able to make it work with DOS programs too. At the moment, there is a Samsung ML-1210 laser printer in my office at work. Windows will print to it, QPC2 didn't until QPCprint came along and DOS programs can't print to it either (I just get a single blank page when I try, as I did with QPC2).

(EEC) *W.N. Richardson & Co.*

Telephone & Fax: 01494-871319

Car phone: 07808 576118

6 Ravensmead
Chaifont St. Peter
Buckinghamshire
SL9 0NB

SINCLAIR QL / Z88

BACKUP QL WITH P.S.U. JS ROM - £85 JM ROM - £70
PART EXCHANGE ALLOWANCE - £15

WE DO REPAIRS, PART EXCHANGES, AND BUY Z88's & PARTS

NEW! CAMBRIDGE Z88 WITH OZ4+512k Internal Ram £150

*** ALSO AVAILABLE, 512k RAMPACK £40 ***

3 Microvitec or similar monitors £40 each.

**All usual Spares, Interfaces, Repairs, and
Part exchange QLs, and Z88**

**I still need Spectrums and parts,
particularly interface ones.**

Z 88 SPECIALS

Eproms 32k, FIVE for £10 128 k £10 each

Rams 512k £35 each

QL & PC COMPUTER USERS WILL FIND THE CAMBRIDGE Z88 ESPECIALLY USEFUL FOR WORK AWAY FROM
THE DESKTOP, WITH TRANSFER PROGS DATA CAN BE SAFELY EXCHANGED WITH THEIR DESKTOP SYSTEM.

W.N. RICHARDSON & CO CONTINUES TO PROVIDE FULL SPARES AND
SERVICES FOR SINCLAIR COMPUTERS, QL & THE CAMBRIDGE Z88

Quanta Magazine

In order to set up QPC2 as a virtual printer driver, you have to download a freeware program from the web called RedMon. This is a port monitor which redirects a special printer port to a program, commonly used with Ghostscript and a non-Postscript printer to emulate a Postscript printer. It must be used with Windows, but that can be Windows 95, 98, NT 4, 2000 or XP (no mention of Windows Me is made). Once you have RedMon, Marcel's instructions guide you through the Windows Add Printer wizard to set up the redirected printer port, installing an Epson printer driver (Epson Stylus 640 suggested as Windows itself has a driver for it) and how to give the name QPCprint to the new virtual driver and complete the setup. This setup process is not for the faint hearted – it involves tackling DOS and Windows issues many of us may not have had to face before. And you have to get it exactly right, there is little or no room for even the slightest of errors.

In Conclusion , the good points about this program are that it's a neat and simple solution to the printing problem with some cheap modern printers. Once set up it's simple to use and pretty transparent to the user. The few screens it shows are well laid out and thoughtfully designed. As long as you bear the few limitations in mind it should handle just about anything you'd throw at it from QL software.

The less positive thoughts I've had about this program are really more to do with the way printer filters in general work. Setup is not easy without good instructions (and as the manual wasn't complete at the time of writing I don't know how good the instructions will be). It is only a "solution" as far as QPC2 users are concerned – the way in which it works is specific to both Windows and QPC2 so there is no chance of it working on a Q60, Aurora, QL, or most other emulators. As printing does not start until the PAR channel is closed, there can be a worrying delay which makes you think the whole system has crashed or simply nothing is happening if the QL software concerned does not have a print progress indication. Setting up fonts can be a little bit tricky and involves some trial and error unless you are able to use the specific examples in the manual. The suggested fonts seem to work quite well, although wrestling with Windows fonts might not be a comfortable task for QLers not used to Windows.

QPCprint is a sadly necessary program for those whose Windows-only printers cannot be used with a QL. It works very well, as you'd expect from Marcel Kilgus and does the job efficiently and painlessly with few restrictions and those restrictions which do exist are not major. It handles colour and mono as well as text and graphics and is a very welcome addition to the software available to us.

QPCprint is written by Marcel Kilgus and published by Jochen Merz Software. QPCprint should be available from most resellers of JMS software.

Quanta Magazine

Proportional printing of QUILL Files pt3 (final) P.H.Warne

```
3445 IF t$(x) INSTR tran$
3450 y=CODE(t$(x))
3455 SElect ON y
3460 =91: c$=CHR$(27)&"-"&CHR$(1)
3465 =93: c$=CHR$(27)&"-"&CHR$(0)
3470 =96: c$=CHR$(156)
3475 =124: c$=" "
3480 =163: c$=FILL$(" ",INT(diff%/10))
3485 =165: c$="": REMark line end
3490 =166: c$="": file_end%=1
3500 REMark TRANSLATE$ cont'd...
3505 =176: IF prop$=orn$: c$=CHR$(27)&"p"&CHR$(0): prop$=off$: ELSE
c$=CHR$(27)&"p"&CHR$(1): prop$=orn$
3510 =180: c$=CHR$(9)
3515 REMark Plenty of room for more translates!
3585 =REMAINDER : NEXT x: REMark to trap chr(255) in ESC \ n1 n2
3590 END SElect
3595 REMark continued ...
3600 REMark TRANSLATE$ cont'd...
3605 IF x=1
3610 IF LEN(t$)=1: t$=c$: ELSE t$=c$&t$(2 TO)
3615 ELSE
3620 IF x=LEN(t$)
3625 t$=t$(1 TO x-1)&c$
3630 ELSE
3635 t$=t$(1 TO x-1)&c$&t$(x+1 TO)
3640 END IF
3645 END IF
3650 END IF
3655 END FOR x
3660 RETurn t$
3665 END DEFine TRANSLATE
3670 :
3800 DEFine FuNction STRETCH$(l$,s%)
3805 LOCal g,h%,j$,k
3810 FOR g=1 TO s%
3815 IF l$(wend%(g))<>" ": IF g=s%: EXIT g: ELSE NEXT g
3820 h%=1: j$=""
3825 REPEAT look
```

Quanta Magazine

```
3830 IF (wend%(g)-h%) AND Is$(wend%(g)-h%)=" ": h%=h%+1: ELSE EXIT look
3835 END REPeat look
3840 j$=FILL$(" ",INT((h%+1)*6/5))
3845 IF (wend%(g)-h%)=1
3850 Is$j$&Is$(wend%(g)+2 TO)
3855 ELSE
3860 Is$=Is$(1 TO (wend%(g)-h%))&j$&Is$((wend%(g)+2) TO)
3865 END IF
3870 FOR k=g TO s%: wend%(k)=wend%(k)+INT((h%+1)/5)
3875 END FOR g
3880 RETurn Is$
3885 END DEFine STRETCH$
4000 DEFine PROCedure PRINTER
4005 PAR_USE "lpt": PRT_USE "par","lpt"
4010 k%=ANYOPEN%("par",0)
4015 REMark Initialise and set left margin on Epson-type printer
4020                                                                 PRINT
#k%,CHR$(27)&"@";CHR$(27)&"P";CHR$(27)&"I"&CHR$(lm%);CHR$(27)&"C"&"B";CHR$(27)
&"p"&CHR$(1);
4025 DATA_READ k%
4030 CLOSE#k%
4035 END DEFine PRINTER
4040 :
4100 DEFine PROCedure FILE_EXPORT (q$)
4105 f$q$(1 TO ("_" INSTR q$))&"exp"
4110 ram$="ram8_"
4115 k%=ANYOPEN%(ram$f$,3)
4120 g$="Printing to Ram8_"&f$
4125 AT 10,(80-LEN(g$))/2: PRINT g$
4130 DATA_READ k%
4135 CLOSE#k%
4140 AT 10,0: CLS 3: PRINT TO 38,"DONE!"
4145 END DEFine FILE_EXPORT
4150 :
4200 DEFine PROCedure SIGN_OFF
4205 AT #0,1,10: CLS#0, 3
4210 PRINT #0,"Another file? (y/n)"
4215 IF INKEY$(-1)=="y"
4220 CLS: NEW_FILENAME: SIGN_OFF
4225 END IF
4230 SCN 4
```

Quanta Magazine

```
4235 END DEFine SIGN_OFF
4240 :
4300 DEFine PROCedure TEST_PRINT
4305 REMark for bug-tracing if required!
4310 PRINT#k%, line$
4315 PRINT#k%, sp%;" / ";diff%;" / ";
4320 FOR x=1 TO sp%: PRINT#k%, wend%(x)&" ";; END FOR x: PRINT#k%
4325 quit$=INKEY$(-1)
4330 IF CODE(quit$)=27: C
4335 END DEFine
4340 :
4400 DEFine PROCedure FS
4405 SAVE_O flp1_miniprop_bas
4410 RESAVE miniprop
4415 END DEFine FS
4420 :
4500 DEFine PROCedure C
4505 CLOSE#%: IF k%>1: CLOSE#k%
4510 SCN 4
4515 END DEFine
4520 :
7000 DEFine PROCedure SCN(screen)
7005 SElect ON screen
7010 =0: REMark Defining SCN 0
7015 IF scr%=0: RETurn
7020 MODE 4
7025 WINDOW#0, 284, 115, 228, 126
7030 BORDER#0, 2, 0: PAPER#0, 4: INK#0, 0
7035 OPEN#1,con_284x126a228x0_128
7040 BORDER#1, 2, 0: PAPER#1, 2: INK#1, 7
7045 OPEN #2,con_232x256a0x0_128
7050 BORDER#2, 2, 0: PAPER#2, 7: INK#2, 2
7055 CLS: CLS#0: CLS#2
7060 scr%=0
7100 REMark Defining SCN 3
7105 =3
7110 IF scr%=3: RETurn
7115 MODE 4
7120 WINDOW#0, 512, 33, 0, 221
7125 BORDER#0, 1, 246: PAPER#0, 5: INK#0, 0
7130 OPEN #1,con_512x222a0x0_128
7135 BORDER#1, 1, 246: PAPER#1, 2: INK#1, 7
```

Quanta Magazine

```
7140 CLS: CLS#0
7145 scr%=3
7200 REMark Defining SCN 4
7205 =4
7210 IF scr%=4: RETurn
7215 MODE 4
7220 WINDOW #0, 512, 50, 0, 206
7225 BORDER #0, 0: PAPER #0,0: INK #0,4
7230 OPEN #1,con_256x202a256x0_128
7235 BORDER #1,1,255: PAPER #1,2: INK #1,7
7240 OPEN #2,con_256x202a0x0_128
7245 BORDER #2,1,255: PAPER #2,7: INK #2,2
7250 CLS: CLS#0: CLS#2
7255 scr%=4
7260 END SElect
7265 END DEFine SCN
7500 DEFine PROCedure CENPRINT (windo%,row%,text$)
7505 LOCAL a$,b$,t%
7510 a$="": b$=""
7515 wide%=(CHAN_W%(#windo%,28) DIV CHAN_W%(#windo%,38))
7520 IF LEN(text$)>wide%
7525 a%=text$(1 TO LEN(text$)/2)
7530 b%=text$(LEN(a$)+1 TO )
7535 t%=" " INSTR b$
7540 a%=a$ & b$(1 TO t%-1)
7545 b%=b$(t%+1 TO )
7550 END IF
7555 REMark cont'd ....
7600 REMark CENPRINT cont'd ....
7605 IF NOT LEN(a$)
7610 AT #windo%,row%,((wide%-LEN(text$)) DIV 2): CLS#windo%,3: PRINT#windo%,text$
& CHR$(10)
7615 ELSE
7620 AT #windo%,row%,((wide%-LEN(a$)) DIV 2): CLS#windo%,3: PRINT #windo%,a$ &
CHR$(10);
7625 AT #windo%,row%+2,((wide%-LEN(b$)) DIV 2):CLS#windo%,3: PRINT#windo%,b$ &
CHR$(10);
7630 END IF
7635 END DEFine CENPRINT
7700 DEFine PROCedure CLEAR_BUFFER
7705 LOCAL dummy
7710 dummy=KEYROW(0)
```

Quanta Magazine

```
7715 END DEFine CLEAR_BUFFER
7800 DEFine FuNction UPPER(case$)
7805 RETurn CODE(case$)-32*(CODE(case$)>96 AND CODE(case
7810 END DEFine UPPER
8100 DEFine PROCedure L(x)
8110 SCN 0
8120 CLS#2
8130 PRINT#2,"SEGMENT" !x \\
8140 LIST x*100+(x=0) TO x*100+99
8150 GO TO 32767
8160 END DEFine L
8200 DEFine PROCedure LP
8210 startlist=10: endlist=29
8220 SCN 0
8230 DISPLAY_PAGE
8240 END DEFine LP
8300 DEFine PROCedure DISPLAY_PAGE
8310 LOCAl x
8320 CLS#2
8330 PRINT#2; "PROGRAM SEGMENTS"\\
8340 FOR x=startlist TO endlist
8350 LIST x*100
8360 END FOR x
8370 CONTROL
8380 DISPLAY_PAGE
8390 END DEFine DISPLAY_PAGE
8400 DEFine PROCedure CONTROL
8405 LOCAl k,diff
8410 CLEAR_BUFFER
8415 k=UPPER(INKEY$(-1))
8420 SElect ON k
8425 =78: diff=20
8430 =66: diff=-20
8435 =REMAINDER : GO TO 32767
8440 END SElect
8445 startlist=startlist+diff
8450 endlist=endlist+diff
8455 END DEFine CONTROL
32767 STOP
```

[Whole listing available on the website]

Quanta Magazine



20 Locks Hill, Portslade, Sussex, BN41 2LB, UK
Tel : +44 (0) 1273 386030 (eves) **Fax** 44 (0) 1273 430501
Mobile : +44 (0) 7836 745501
email : sales@qbranch.demon.co.uk
web www.qbranch.demon.co.uk

We can supply most programs available for QDOS/SMSQ systems. We can so metimes supply second user hardware - contact us to see what is available because supplies can vary. We are also agents for QLToday - **THE** QL magazine.

QDT is available now !

QDT , by Jim Hunkins.

It is a complete desktop replacement which gives users many of the advantages found on more modern systems. Fully self installing and configurable.

£32.00

(£10.00 discount on SMSQ/E if bought with QDT before end march 05)

Come to a QL show and ask to see a demonstration or download a demo copy from our website.

System requirements :

Software

SMSQ/E, QPAC2, GD2 Colour Drivers,

Hardware :

Aurora Motherboards

We have a small number of new boards available. They can be supplied complete with Minerva and 8302 chips.

With 8302 chip **£50.00** with Minerva and 8302 chip **£ 70.00**

Second user Gold / Super Gold Cards in stock now.

Second User Qubide **£ 45.00**

Keyboard Membranes !

Last Few, New QL Keyboards membranes are available now !

£ 17.50 + p&P

Text 87 patch!

The patch that allows QPC2 owners to run T87 in high colour mode for QPC 2, QXL, Q40 and High Colour Aurora systems.
available now - only £ 9.00

TF Services

Compswitch

A UK 4-way trailing socket designed to switch off computer peripherals automatically when the computer is switched off, or (in the case of an ATX computer) when it auto-powers down. **Compswitch** has one control socket, and three switched sockets.

Can be used with lights/hifi/monitors—ie a QL monitor can be used as a switch control.

Cost **£24**

superHermes

A major hardware upgrade for the QL

All Hermes features (working ser1/2 at 19200, independent baud rates/de-bounced keyboard/keyclick) IBM AT kbd I/F // HIGH SPEED RS232 at 57600// serial mouse port and 2 other RS232 inputs// 3 I/O lines // EEPROM

Cost (including manual/software) **£90** (£92/£93)
IBM AT UK layout Keyboard..... **£11** (£13/£15)
Serial mouse..... **£8** (£8.50/£9)
Capslock/scrolllock LED **£1** (£1.50/£1.50)
Keyboard or mouse lead **£3** (£3.50/£3.50)
High speed serial (ser3) lead..... **£4** (£4.50/£4.50)

Hermes available for **£25** (£26/£27) Working ser1/2 and independent input, debounced keyboard.

SuperHermes LITE: All Hermes features (see above) + an IBM AT keyboard interface only.

Cost (incl keyboard lead) **£53** (£54/£55)

QL REPAIRS (UK only)

Fixed price for unmodified QLs, excl microdrives. QLs tested with Thom-EMI rig and ROM software.

£27 incl 6 month guarantee

Minerva

The ORIGINAL system operating system upgrade

OTHER FEATURES COMMON TO ALL VERSIONS

DEBUGGED operating system/ autoboot on reset of power failure/ Multiple Basic/ faster scheduler- graphics (within 10% of lightning) - string handling/ WHEN ERROR/ 2nd screen/ TRACE/ non-English keyboard drivers/ "warm" fast reset. V1.97 with split OUTPUT baud rates (+ Hermes) & built in Multibasic.

First upgrade free. Otherwise send **£3** (+£5 for manual if reqd). Send disk plus SAE or two IRCs

MKL...**£40** (£41/£43) MKIL...**£65** (£66/£67)

MINERVA RTC (MKII) + battery for 256 bytes ram.
CRASHPROOF clock & I²C bus for interfacing. Can autoboot from battery backed ram. Quick start-up.

QL RomDisq

Up to 8 mbyte of flash memory for the QL

A small plug in circuit for the QL's ROM port (or Aurora) giving 2, 4 or 8 mbytes of permanent storage - it can be thought of as a portable hard disk on a card, and reads at some 2 mbytes per second.

Think of it - you could fully boot an expanded QL, including all drivers/SMSQ etc off **RomDisq** at hard disk speed with only a memory expansion needed.

2 mbytes RomDisq..... **£39** (£40/£41)
4mbytes RomDisq..... **£65** (£66/£67)
8 mbytes RomDisq..... **£98** (£99/£100)
Aurora adaptor..... **£3** (£3.50/£4)

MPLANE

A low profile powered backplane with ROM port

A three expansion backplane with ROM port included for RomDisq etc. Aurora can be fitted in notebook case and powered off single 5V rail - contact QBranch for details. Two boards (eg Aurora and Gold Card/Super Gold Card/Goldfire fixed to base. Suitable for Aurora (ROM accessible from outside) & QL motherboard in tower case. Specify ROM facing IN towards boards, or OUT towards back of case.

Cost **£34** (£35/£36)

I²C INTERFACES

Connects to Minerva MKII and any Philips I²C bus

Power Driver Interface 16 I/O lines with 12 of these used to control 8 current carrying outputs (source and sink capable)

2 amp (for 8 relays, small motors)..... **£40** (£43/£44)

4 amp total (for motors etc)..... **£45** (£48/£50)

Relays (8 3a 12v 2-way mains relays (needs 2a power driver)..... **£25** (£28/£29)

Parallel Interface Gives 16 input/output lines. Can be used wherever logic signals are required..... **£25** (£27/£28)

Analogue Interface Gives eight 8 bit analogue to digital inputs (ADC) and two 8 bit digital to analogue outputs (DAC). Used for temp measurements, sound sampling (to 5 KHz), x/y plotting..... **£30** (£31/£32)

Temp probe (-40°C to +125°C)..... **£10** (£10.50/£11)

Connector for four temp probes..... **£10** (£10.50/£11)

Data sheets..... **£2** (£2.50/£3)

Control software & manual (for all I/F)..... **£2** (£2.50/£3)

QL SPARES

Keyboard membrane **no longer on sale**
1377 PAL **£3** (£3.50/£4)
Circuit diagrams..... **£3** (£3.50/£4)
68008 cpu or 8049 IPC..... **£8** (£8.50/£9)
8301/8302 or JM ROM or serial lead..... **£10** (£10.50/£11)
Power supply (see mail overseas)..... **£12** (£17/£21)
Other components (sockets etc) also available

Prices include postage and packing (Airmail where applicable) Prices are: UK (Europe / Rest of world). Payment by cheque drawn on bank with UK address, postal order or CASH! I can no longer accept card payments as UK only does PDQ transaction. SAE or IRC for full list and details

31 Oct 02

29 Longfield Road, TRING, Herts, HP23 4DG

Tel: 01442-828254

Fax/BBS: 01442-828255

tony@firshman.co.uk

http://www.firshman.co.uk